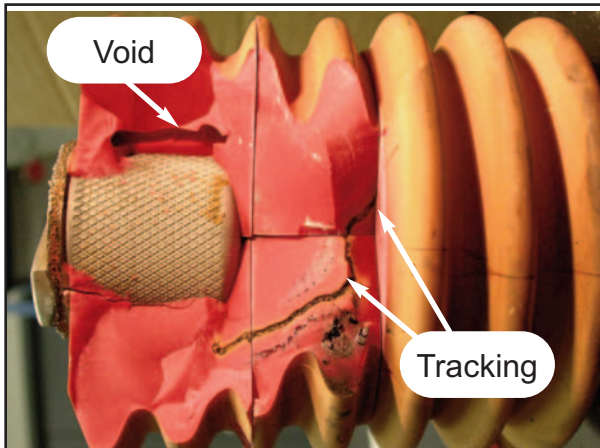


## Overhead T&D Component Failure Analysis and Testing



### Overhead T&D Component Failure Analysis and Testing

- Electrical, Mechanical, Metallurgical
- Root Cause Analysis Support
- Electron Microscopy w/ Elemental Analysis
- Testing of New T&D Components
- Metallographic Evaluation
- Hardness Testing; metal/ elastomer
- Component Functional Testing
- Hydraulic / Pneumatic Controls
- Calibration of High-Voltage Test Equipment and other M&TE
- Web access to test reports & searches
- Experienced Power Industry staff



### Links to Additional Services

- **CGI Dedication & PQI Testing**
- **Electrical, Electronic, I & C**
- **EMI/RFI Characterization**
- **Mechanical & Metallurgy**
- **OHT/ T & D Components & Hardware**
- **Radiological Hot Lab**

Tom Wait, Manager  
(610) 380-2654  
[thomas.wait@exelonpowerlabs.com](mailto:thomas.wait@exelonpowerlabs.com)

Tom Pessa, Sales Manager  
(610) 380-2510  
[thomas.pessa@exelonpowerlabs.com](mailto:thomas.pessa@exelonpowerlabs.com)

The Exelon PowerLabs Quality System meets 10CFR50 Appendix B, 10CFR21, ANSI N45.2, ANSI/NCSL Z540-1, and NQA-1. We are also ISO 9001:2008 Registered\* and ISO 17025 Accredited\*.  
NUPIC and NIAC Audited

Visit us at [www.exelonpowerlabs.com](http://www.exelonpowerlabs.com)